



Events

AT

CITY WINERY
PHILADELPHIA

WELCOME TO...

City Winery Philadelphia

Indulge your senses by hosting your next event in Urban Wine Country! From 11 to 1,100 guests, City Winery Philadelphia can accommodate intimate gatherings to expansive galas in the Concert Venue, industrial chic Winery, Private Barrel Room, and The Loft. Come to City Winery, where the rustic appeal of wine country meets modern, urban amenities.

THE VENUE

Tasting Room and Winery
Two floors, 8 Event Spaces
Tables, Chairs, China, Flatware, Napkins
Riedel Stemware
Professional Event Staff

CURATED CULINARY EXPERIENCES

In-House Winery
Award-Winning City Winery Wines
Full premium Bar & International Wine List
Fully Customizable Culinary Menus

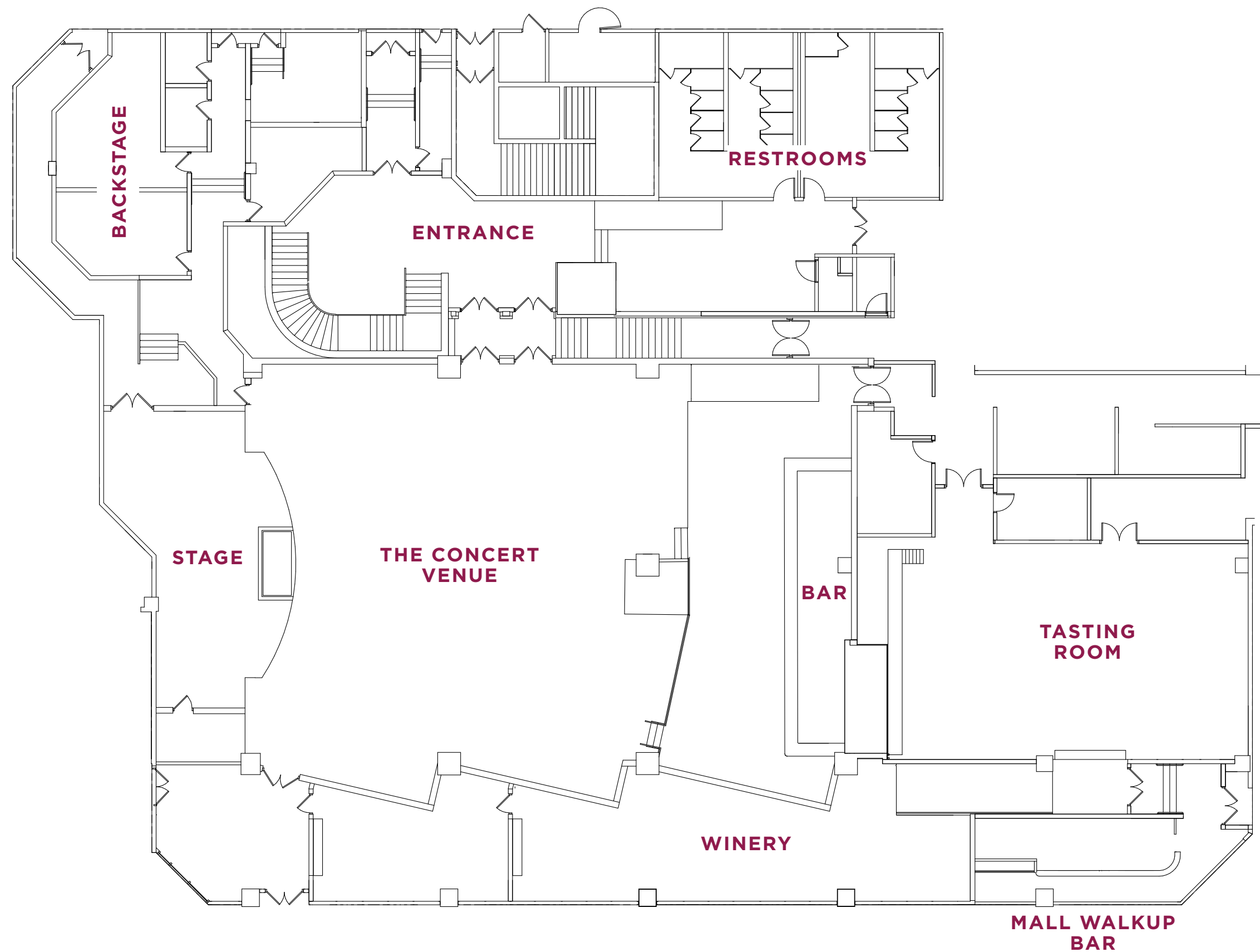
PRODUCTION

VIP & Talent Management
Green Rooms & Hospitality services
Loading Dock
State-of-the-Art Audio/Visual Service
Three Screens in The Concert Venue,
One Screen in The Winery

CITY WINERY'S IN-HOUSE EXPERTS

Winemakers
Sommeliers
Executive Chefs
Technical Director
Hospitality Event Director
Programming Director

Concourse Level



VENUE BUYOUT

11 - 1,100

Enjoy exclusive access to all of City Winery, including the barrel-stave decorated restaurant with views of the spacious Patio, the Winery, and the Concert Venue, which has hosted performers from Emmylou Harris to Avery*Sunshine.

THE CONCERT VENUE

250 Seated / 400 Reception Style

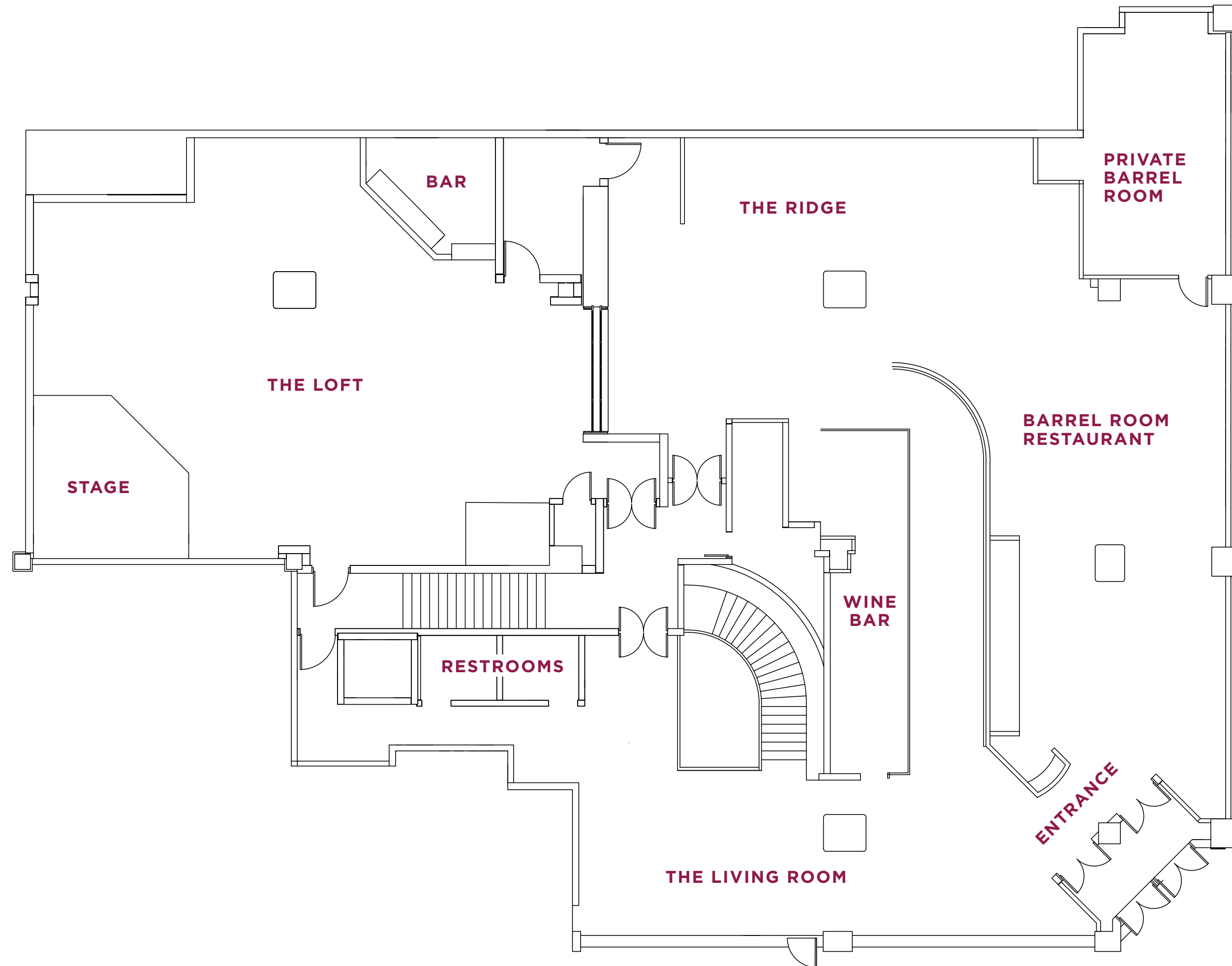
Boasting a spacious stage and exceptional Meyer Sound system along with complete audio, video, and lighting capabilities, this location has a separate entrance, green room, and full-size bar..

THE WINERY

75 Seated / 100 Reception Style

Transform this working Winery, complete with stainless steel fermentation tanks, into the backdrop for a small wedding ceremony, wine blending experience, or intimate cocktail party.

Ground Level



THE PRIVATE BARREL ROOM

20 Seated/ 35 Reception Style

A smaller private dining space, adjacent to the restaurant, with large, reclaimed wood tables and a view of stacked oak barrels.

THE BARREL ROOM RESTAURANT & WINE BAR

160 Seated / 225 Reception Style

The main dining room exhibits a small winery and views of the spacious patio. Deconstructed wine barrels align the walls, and the space features a beautiful, fully-stocked bar including our tap wines.

THE LOFT

140 Seated / 200 Reception Style

Featuring a removable stage, this room is perfect for performances, presentations, and more for corporate or social events.

Reception Menus

(ONE HOUR OF SERVICE)

PASSED HORS D'OEUVRES

\$32 per person per hour (select six)

ARANCINI v risotto balls-fresh mozzarella, pesto and mozzarella, or roasted mushroom

ZUCCHINI PESTO BRUSCHETTA v zucchini pesto, burrata, pickled fresno pepper

CAPRESE PIPETTE v tomato, mozzarella, balsamic drizzle

HOT HONEY CHICKEN BITES fried chicken, dill pickle, tabasco honey

PORK BELLY SKEWER whiskey maple glaze

MINI BEEF SLIDERS spicy ketchup, cheddar cheese, pickle

SHRIMP DIABLO SKEWER spicy pomodoro sauce, fennel, orange zest

MARYLAND STYLE CRABCAKE remoulade, saltine cracker

SEARED TUNA SKEWER sesame seeds, pickled baby beets

Jerk Chicken Skewers

CHEESE & CHARCUTERIE

+22 PER PERSON

CHEF'S SELECTION assorted three cured meats and three cheeses honey, fresh fruit, dried fruits, sea salt roasted nuts whole grain mustard crackers, toasted baguette

WOOD OVEN FLATBREAD STATION

+18 PER PERSON

MARGHERITA mozzarella, basil, San Marzano tomato sauce

WILD MUSHROOM v sautéed mushrooms, goat cheese bechamel, caramelized onion, arugula, balsamic glaze

SOPPRESSATA mozzarella, Soppressata, San Marzano tomato sauce

CW PESTO pine nuts, feta cheese, house made pesto sauce, roma tomato, fresh arugula

SLIDER STATION

\$22 per person (select four)

CHEESEBURGER roasted shallot aioli

FRIED CHICKEN pickle, honey mustard

BBQ BEEF jicama slaw

PULLED PORK grilled pineapple

PORTOBELLO MUSHROOM rosemary aioli

CRAB CAKE chipotle tartar

GRILLED VEGGIE pesto mayo

GRILLED CHICKEN brie, tomato jam

MEATBALL Nonna's tomato sauce, mozzarella

BLT thick cut hickory smoked bacon, roma tomato, romaine, lobster aioli

TASTE OF PHILLY

\$28 per person

CHEESESTEAK EGGROLLS shaved ribeye, grilled onions, whiz

MINI ITALIAN HOAGIES assorted Italian deli meats, provolone cheese, onion, tomato, mayo

SAUSAGE AND PEPPERS penne pasta, Italian sausage, red and green peppers

PHILLY SOFT PRETZELS served with spicy brown mustard

ASSORTED TASTYKAKES AND HERR'S CHIPS

Vintage Seated Menu

\$70 PER PERSON ++ — menu includes soft drinks and iced tea

FIRST COURSE

select one

- KALE CAESAR SALAD** creamy caesar, house-made croutons, shaved parmesan, baby kale, cherry tomatoes
- MUSHROOM AND GOAT CHEESE RISOTTO BALLS** porcini, portobello, arrabbiata, grated parmesan
- MODERN WEDGE** candied bacon, buttermilk dressing, blue cheese, hard egg cured, tomato, radish, chive
- BABY SPINACH SALAD** smoked bacon, chopped hardboiled egg, crispy onions, sweet onion vinaigrette
- ROASTED MUSHROOM RAGOUT** grilled focaccia, madeira mushroom jus, burrata

SECOND COURSE

select two - City Winery to include silent vegetarian option

- MEDITERRANEAN CHICKEN BREAST** feta and tomato polenta, City Winery roasted brussels sprouts
- DUCK TOSTADA** crispy corn tortilla, braised duck, salsa roja, avocado crema, shredded lettuce, cabbage, and carrot
- RATATOUILLE WITH BAKED POLENTA** roasted portabella mushrooms, broccolini, ratatouille vegetables, grated parmesan
- SEARED SALMON** Isreali couscous, blistered cherry tomato, shaved fennel, and dill relish
- ORGANIC CHICKEN TAGINE** couscous, roasted vegetables
- BRAISED BEEF SHORT RIB** hoisin-bourbon jus, whipped potatoes, carrots, ginger
- STEAK FRITES** hanger steak, herb-seasoned house fries, duck fat bearnaise

THIRD COURSE

select one

- CHOCOLATE CHEESECAKE**
- CANNOLI RICOTTA CREAM PIE**

ENHANCEMENTS

FAMILY STYLE SIDES

additional \$5 per person

- CW BRUSSEL SPROUTS** fried, molasses vinaigrette, feta
- MAC & CHEESE** manchego, chorizo crumble, chive
- CW FRIES** herb-seasoned house fries

FAMILY STYLE FLATBREADS

additional \$8 per person

- MARGHERITA FLATBREAD** san marzano tomato sauce, buffalo mozzarella, basil
- BURRATA FLATBREAD** homemade pizza dough, red sauce, arugula, red onion, prosciutto, burrata, EVOO drizzle

FAMILY STYLE DESSERTS

additional \$8 per person

- CHEF'S SELECTION** assorted petit fors

Beverage Packages

BEER & WINE PACKAGE

City Winery Red Wine, White Wine, Rose Wine, Sparkling Wine, Assorted Craft beer, Soft Drinks, and Juice

2 hours **\$36 per person**

3 hours **\$48 per person**

4 hours **\$58 per person**

CLASSIC BEVERAGE PACKAGE

City Winery Red Wine, White Wine, Rose Wine, Sparkling Wine, Assorted Craft Beers, Assorted Soft Drinks and Juices

Tito’s Vodka, Citadelle Gin, Plantation White Rum, Bribon Blanco Tequila, Four Roses Bourbon, Teacher’s Scotch, Old Overholt Dry Rye

2 hours **\$42 per person**

3 hours **\$56 per person**

4 hours **\$66 per person**

RESERVE BEVERAGE PACKAGE

City Winery Red Wine, White Wine, Rose Wine, Sparkling Wine, Assorted Craft beer, Soft Drinks, and Juice

Ketel One Vodka, Bombay Sapphire Gin, Bacardi White Rum, Plantation Dark Rum, Chamucos Blanco Tequila, Banhez Joven Mezcal, Knob Creek Bourbon, Knob Creek Rye, Monkey Shoulder Scotch, Pierre Ferrand 1840 Cognac

2 hours **\$48 per person**

3 hours **\$64 per person**

4 hours **\$78 per person**

GRAND CRU BEVERAGE PACKAGE

City Winery Red Wine, White Wine, Rose Wine, Sparkling Wine, Assorted Craft Beer, Soft Drinks, and Juice

Grey Goose Vodka, Hendricks Gin, Bank Rum 5 Island, Banks Rum 7 Golden Age, Don Julio Blanco Tequila, Del Maguey Mezcal, Basil Hayden’s Bourbon, Basil Hayden’s Dark Rye, Glenmorangie Scotch Single Malt 10 Year, Courvoisier Cognac VSOP

2 hours **\$80 per person**

3 hours **\$90 per person**

4 hours **\$100 per person**

ENHANCEMENTS

BOTTLED WATER UPGRADE

(existing bar package)

S.Pellegrino Sparkling Natural Mineral Water

Aqua Panna Natural Mineral Water

SIGNATURE COCKTAIL UPGRADE

Choice of 2 City Winery Signature Cocktails that match the bar package selections

MOCKTAILS

Choice of 2 City Winery Signature Mocktails

NON ALCOHOLIC BEVERAGE PACKAGE

Soft Drinks, Juice, Coffee, and Tea

Wine Experiences

WINE PAIRING

\$15 per person

Tasting of 3 City Winery wines (3 oz pour each)
paired with each course

WINE AND FLATBREAD PAIRING

\$65 per person

Guest Count minimum 15 people

hours 60 minutes

Cheers with a glass of Sparkling Wine to kick off the event

Tasting of 5 City Winery wines paired with specifically
crafted flatbreads served family style

WINE AND CHEESE PAIRING

\$75 per person

Guest Count minimum 15 people

hours 60 minutes

Cheers with a glass of Sparkling Wine to kick off the event

Tasting of 5 City Winery wines paired with the chef's selection
of Artisanal Cheese served family style

THE BLENDING EXPERIENCE

\$180 per person

Guest Count minimum 5 people

hours 90 minutes

Begin with a Winery Tour and Sparkling Wine toast

Overview of the blending process and the wines that will be blended

Interactive Group Blending Experience
(Groups of 4 people or Groups of 8 people)

Post-blending reception with City Winery wines,
and 4 tray passed Hors D'Oeuvres

Prize for group that blends the best wine (determined by the winemaker)

Chef curated four course dinner with Wine Pairing starting at \$150 per person

Seasonally inspired menu paired with City Winery Wines

Maximum of 15 guests



Production Specs

MAIN VENUE

AUDIO

MAIN PA

- 8-Meyer M’elodie line array- 4 boxes hung per side
- 4-Meyer UPJunior stage front fill/downfill
- 2-Meyer UPQ-1P’s- 1 per side (platforms delays)

SUBS

- 3-Meyer 600HP mainstage subwoofers – under stage
- 2-Meyer 750-LFC delay subwoofers

PROCESSOR

- 1-Galileo 616

FOH SOUND DESK & MAIN SNAKE

MIX POSITION IS CROWS NEST OF BALCONY LEVEL

- 1-Yamaha CL5 Control Surface –
- 1x Rio 3224D/ 1x Rio 1608D

MONITORS BOARD, MONITORS & IN-EAR MONITORS

- 7-Meyer UM1P Low Profile Stage Monitors
- 2-JBL SRX 812 Supplemental Stage Monitors
- (Monitors mixed from FOH Sound Console (Yamaha CL5)

WINERY

PROJECTION

- 1-BenQ MH740 DPL Projector (fed from HDMI wall port)
- 1-Front Firing Elite Manual Pull Down Projection -
- 130” x 74” (16:9 aspect ratio)

MICROPHONES & DIS

- 6-Shure SM58
- 6-Shure Beta 58A
- 10-Shure SM 57
- 1-Shure Beta 57A
- 4-Shure SM81
- 1-Shure Beta 91
- 3-Shure Beta 98
- 3-Senn 604
- 8-Klark Technik DN100 Active DI 1-Helpinstill Strip Pickups (For Piano) 2-DPA 4099P (For Piano)
- 1-Shure UXLS Wireless HH SM58 Receiver/ Transmitter

MICROPHONE/ MUSIC / GUITAR STANDS

- 6-Atlas M520 Heavy Duty Round Base- Tall Boom 8-K&M 25910b mic stand- Tall Boom
- 5-K&M 201308B mic stand- Short Boom
- 4-Short Table Tops(No Boom)
- 6-Music Stands (No Lights)
- 6-Hercules headstock clamp guitar stands

AUDIO

- 1-Shure UXLS Wireless HH SM58 Receiver/ Transmitter
- 6-JBL Control 28 Ceiling-Mounted Speakers

VIDEO

PROJECTION HOUSE LEFT AND RIGHT (FLANKING STAGE)

- 2-Digital Projection Evision 6500 lazer projectors
- 2-Front Firing Draper motorized projection screens-
- 105”x 60”- (16x10 aspect ratio)

PROJECTION STAGE

- 1-Digital Projection Evision 6500 lazer projectors
- 1-Front Firing Draper motorized projection screens-
- 130” wide - (16x10 aspect ratio)

VIDEO MIXER

- 1- Roland v800 HD video mixer-located at soundboard position (HDMI input only)

BACKLINE

- 1-Yamaha Baby Grand C3 Piano
- (for use on main stage only)

BESIDES THE PIANO, CITY WINERY PHI DOES NOT CARRY ANY BACKLINE OR DJ GEAR IN-HOUSE

Production Specs

THE LOFT

AUDIO

MAIN PA

- 4-JBL SRX812 Boxes Main Mid-Hi PA
(2 per side – 1 main – 1 Out fill Suspended from Ceiling)
- 2-JBL VRX918SP Single 18” sub-woofers
(1 per side – Suspended from Ceiling)

STAGE MONITORS

- 6-QSC K10.2 boxes

MIXING CONSOLE AND STAGE BOXES

- (1-cat 5 snake from FOH to Stage)
- 1-Midas M32R digital mixing console
(monitors mixed from FOH)
- 1-Midas DL 32 stagebox (32 inputs x 16 outputs)
- 2-12x4 XLR sub-snakes on stage to TIOS

MICROPHONES & DIS

- 1-Shure Beta 52A 6 – Shure SM57LC
- 6–Shure SM58
- 2-AKG P420
- 2-Senn 604
- 8-AR133 (ACTIVE DI BOX)

MICROPHONE / GUITAR STANDS

- 8-KM210/6 X-TALL ALL BLACK FLR STAND,
TRIPOD, LNG BOOM
- 6-AKG KM259 - Low Profile Tripod
Microphone Stand with Boom
- 4-Hercules headstock clamp guitar stands

VIDEO PROJECTION

- 2-BenQ MH740 DPL Projectors
- 2-Projection Screens - Manual Pulldown-
105”x74” - 16:9 aspect ratio
(fed via HDMI input at soundboard or upstage left)

PROJECTION STAGE

- 1-Digital Projection Evision 6500 lazer projectors
- 1-Front Firing Draper motorized projection screens-
130” wide - (16x10 aspect ratio)

VIDEO MIXER

- 1- Roland v800 HD video mixer-located at soundboard
position (HDMI input only)

BACKLINE

- 1-Yamaha P22 Upright Piano
(for use on main stage only)

**BESIDES THE PIANO, CITY WINERY PHI DOES NOT
CARRY ANY BACKLINE OR DJ GEAR IN-HOUSE**

contact us

267.479.7373 | eventsphiladelphia@citywinery.com
citywinery.com/philadelphia

