

W PHILADELPHIA

ELEMENT PHILADELPHIA

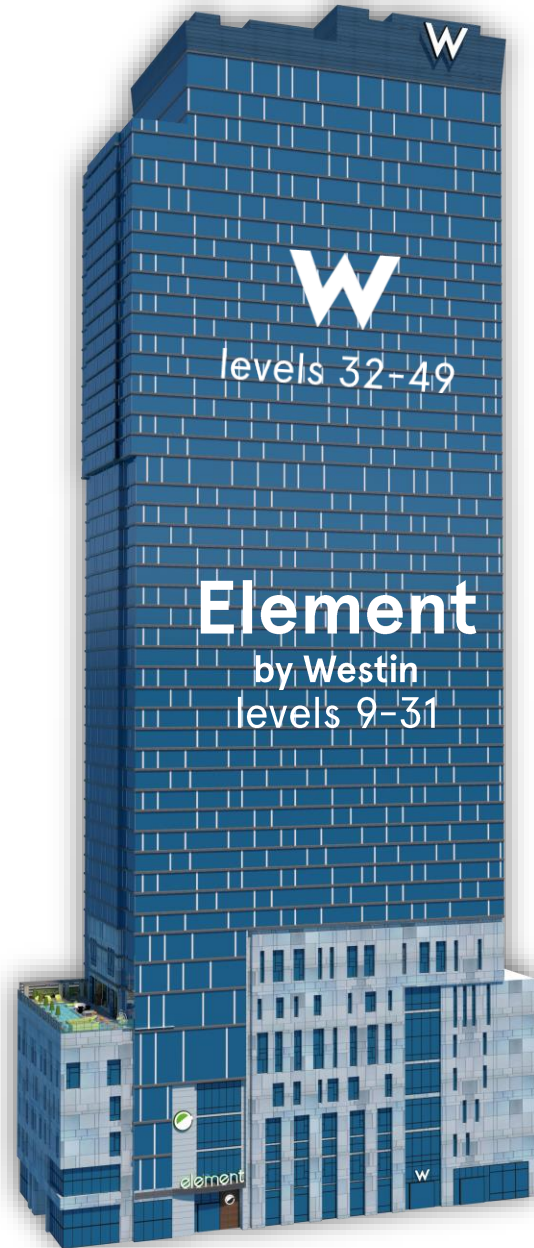


# RING FREE

Inspired by the city's revolutionary history, W Philadelphia is dedicated to what's new and next. In the spirit of our forefathers, we buck tradition, take a stand for liberty and welcome our guests to live it up as they are, 24/7. Making an entrance spring, 2021.

W Philadelphia  
1441 Chestnut St | Philadelphia, PA 19102

Element Philadelphia  
1431 Chestnut St | Philadelphia, PA 19102



W PHILADELPHIA

ELEMENT PHILADELPHIA

# STAY IN YOUR ELEMENT

At the Element, we believe everyone deserves to be well – no matter who they are, where they come from, or how long they're away from **home**. That's why we offer seamless and *intuitive wellness*, built in from the start.

## STATS:

460 Rooms

46 Suites

Complimentary Breakfast

Complimentary Internet





# LOCAL BY DESIGN

W Philadelphia offers a modern, luxurious design developed in homage to the region's art, culture and rebellious roots. The experience at W Philadelphia is delivered with the same dedication as the city's famed passion and grit.

## INSPIRATIONS:

Fairmount Park & Gardens  
City mural art  
The Mutter Museum





W PHILADELPHIA

ELEMENT PHILADELPHIA

# CHANGE YOUR POV

Vivid colors, *playful design* and historical references define the space with ultimate views of the city. Wake up in the comfort of our signature W bed, with its pillow-top mattress, fluffy goose-down duvet and 350-thread count Egyptian cotton sheets.

## INSPIRATIONS:

Historical Icons

LOVE Park

Architectural Features





W PHILADELPHIA

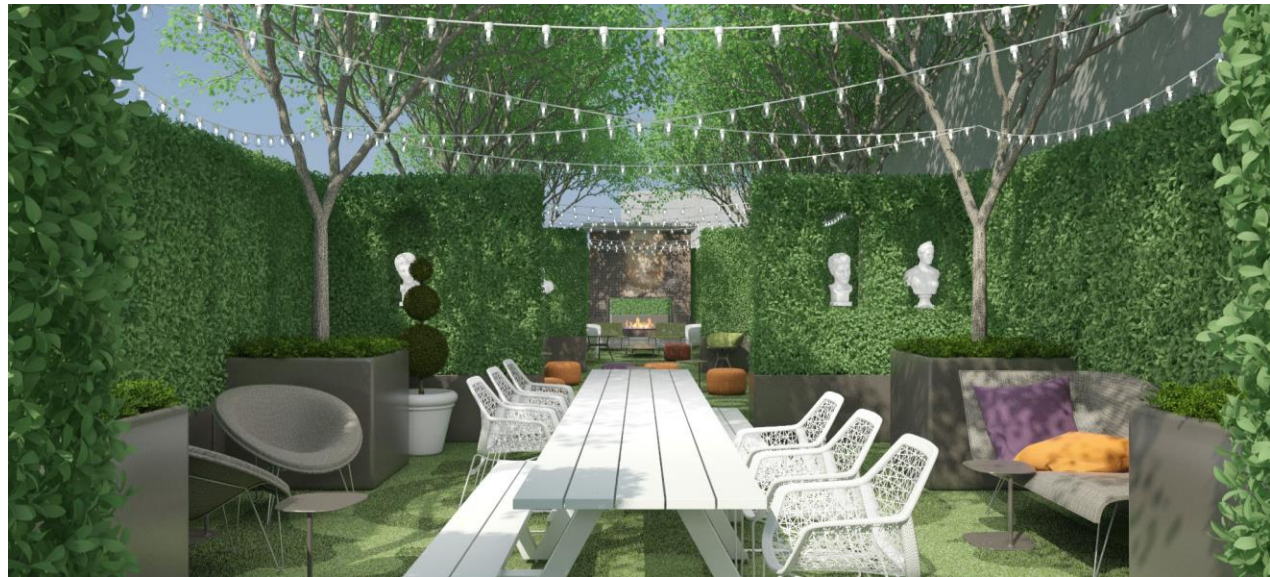
ELEMENT PHILADELPHIA

# URBAN UNEXPECTED

The electric energy of the city is balanced with unexpected amenities that invite guests to relax and recharge. Developed with intention, W Philadelphia delights as an urban oasis – year-round.

Rejuvenate at AWAY Spa or hit FIT Gym, with outdoor yoga space, all designed to help you *go further*.

Detox. Retox. Repeat.





W PHILADELPHIA

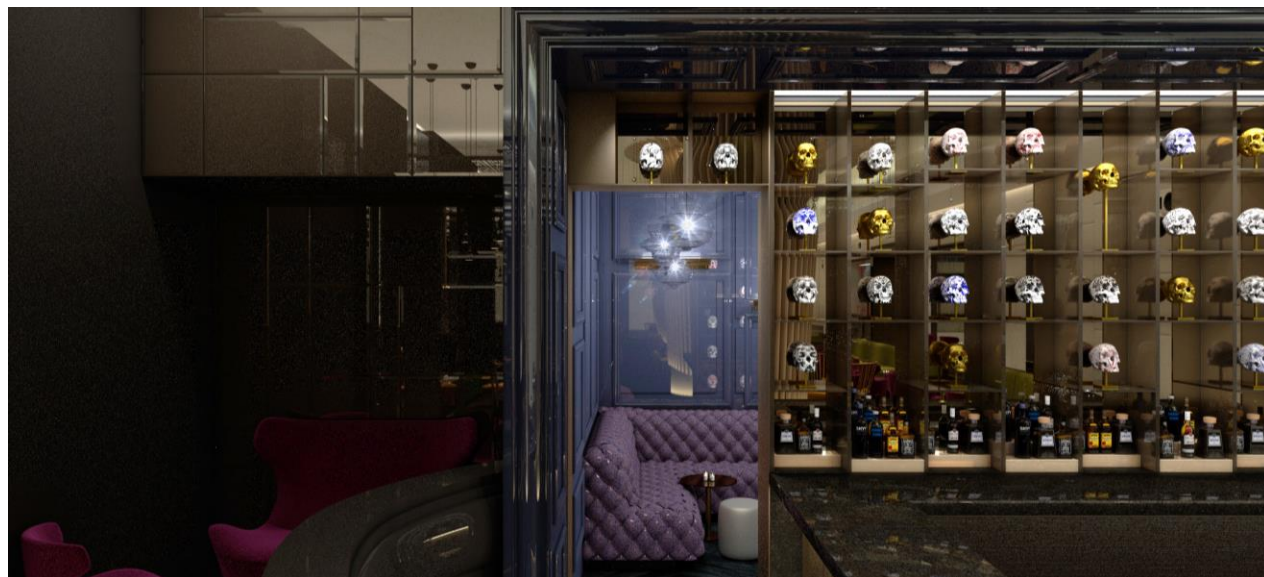
ELEMENT PHILADELPHIA

# ONE OF A KIND BARS

W Philadelphia connects locals and guests through an innovative beverage and food offering. With three distinct dining and cocktail venues, and regular music, fitness and cultural programming, we ignite the senses and fuel the scene.

## STATS:

3 Outlets: Dolce + 2 Bars  
LDV Hospitality Partnership

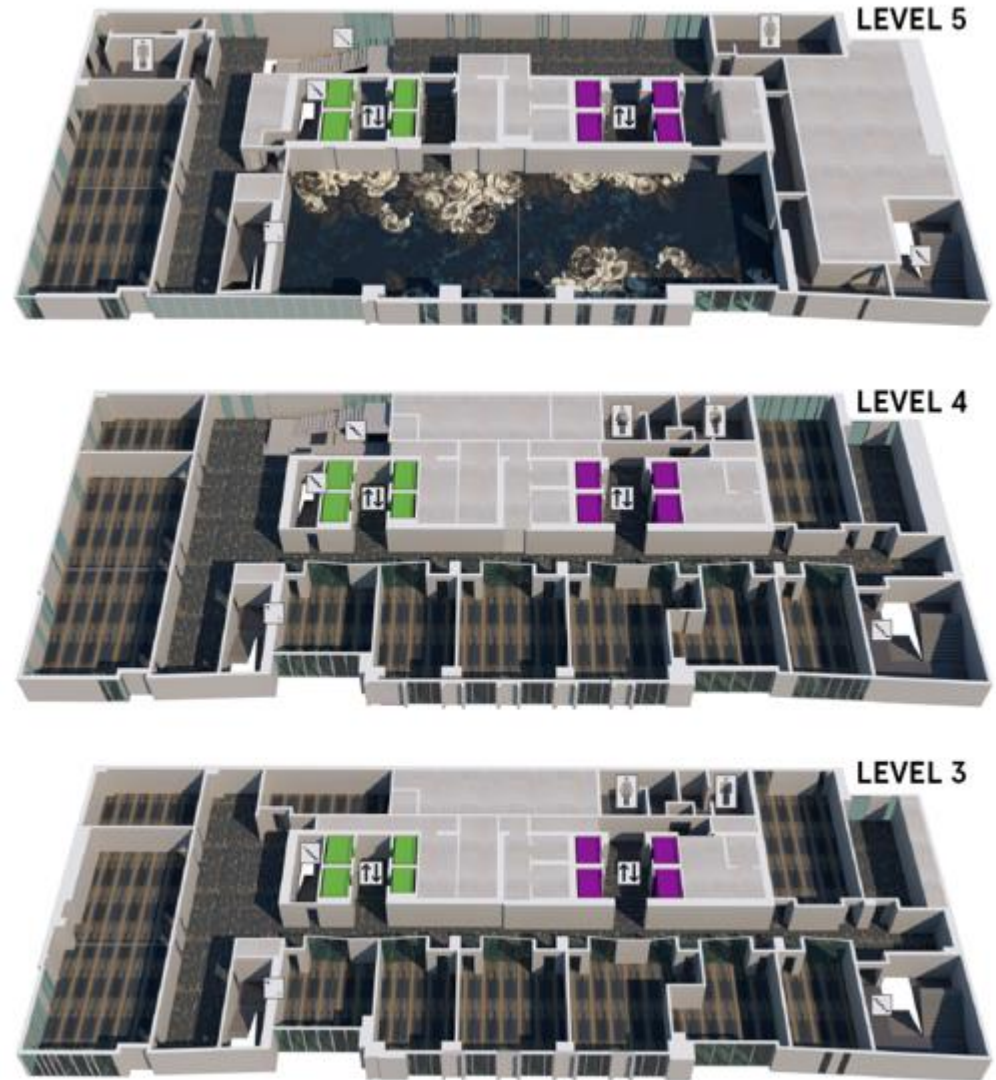


# ELEVATED EVENTS

Stand above the rest in 45,000 sf of shared event space. Think beyond the board room and have the liberty to be yourself at W Philadelphia with unrivaled soirees, events and more for up to 300 seated guests.

5,500 sf Great Room  
7,000 sf of Outdoor Space and Pool Bar  
28 event spaces  
755 combined sleeping rooms  
85 total Suites

Natural light in all event spaces  
No columns or visual obstructions  
2 Boardrooms



Online capacity chart, click [here](#).

# WHERE LUXURY MEETS

On the corner of Broad Street and Chestnut Street lies two hotel-industry giants, The Ritz Carlton and W Hotels. With commonalities focused on local design and art, our brands both tell the unique story of the origins of our democracy, but through a different lens. Indulge in our city's foodie culture at the Ritz Carlton, with Chef Richard Sandoval's Latin-inspired dishes at Aquimero or stop by W's rooftop Wet Deck for custom crafted cocktails in the Secret Garden.

Our strength lies in our differences, but our passion and commitment to great service is unified. Visit Philadelphia and join us where luxury meets.



[\(https://www.five-starav.com/\)](https://www.five-starav.com/)