

HYATT REGENCY MINNEAPOLIS

1300 Nicollet Mall
Minneapolis, MN 55403
USA

T +1 612 370 1234
F +1 612 370 1463
minneapolis.hyatt.com



ACCOMMODATIONS

645 guestrooms, including 310 kings, 269 queen/queens, 48 suites/parlors, 18 deluxe kings. Included in these rooms are 20 accessible rooms and 28 Regency Club®

All Accommodations Offer

- King rooms with pull out sofa beds
- Wireless high-speed Internet
- 37-inch flat-screen television with remote control, cable movie channels, in-room pay movies
- Video messages, video account review, video checkout
- Voicemail, two telephones with message light, and data port
- Individual climate control
- Electronic door locks
- In-room laptop-sized electronic safe
- Turndown service available on request
- Full bath amenities and hair dryer
- Coffeemaker with complimentary coffee & tea
- Iron / ironing board
- iHome alarm clock

SERVICES & FACILITIES

- Hyatt Express Check-In Kiosk
- In-room dining
- Concierge
- FedEx® Office
- Multilingual staff
- Assistive listening devices
- Currency exchange
- Safe-deposit boxes at front desk
- Laundry / Dry Cleaning
- Valet laundry service
- Valet parking, covered parking
- Gift shop
- Soda, ice machines on each floor
- 24-hour on-site security
- Dedicated pet friendly rooms

LOCATION

Located on Nicollet Mall in the heart of the downtown business district, Hyatt Regency Minneapolis provides spectacular views of the city skyline, skyway connection to Minneapolis Convention Center, and convenient access to the light rail system

VISITOR INFORMATION

- Language: English
- Currency: USD
- Climate: four distinct seasons
- Visa: Please refer to your local travel consultant for visa information prior to travel

TRANSPORTATION

- Minneapolis-St. Paul Int'l Airport—13 miles / 20 mins

POINTS OF INTEREST

- Walker Arts Center / Minneapolis Sculpture Garden
- Guthrie Theater
- Historical State and Orpheum Theaters
- Minneapolis Convention Center
- Nicollet Mall shopping & dining
- Orchestra Hall
- Mall of America within 20 minutes
- Target Center (Minnesota Timberwolves)
- Mall of America Field at Hubert H. Humphrey Metrodome (Minnesota Vikings)
- Target Field (Minnesota Twins)
- Xcel Energy Center (Minnesota Wild)
- Loring Park
- Eat Street / Restaurant Row

RESTAURANTS & BARS

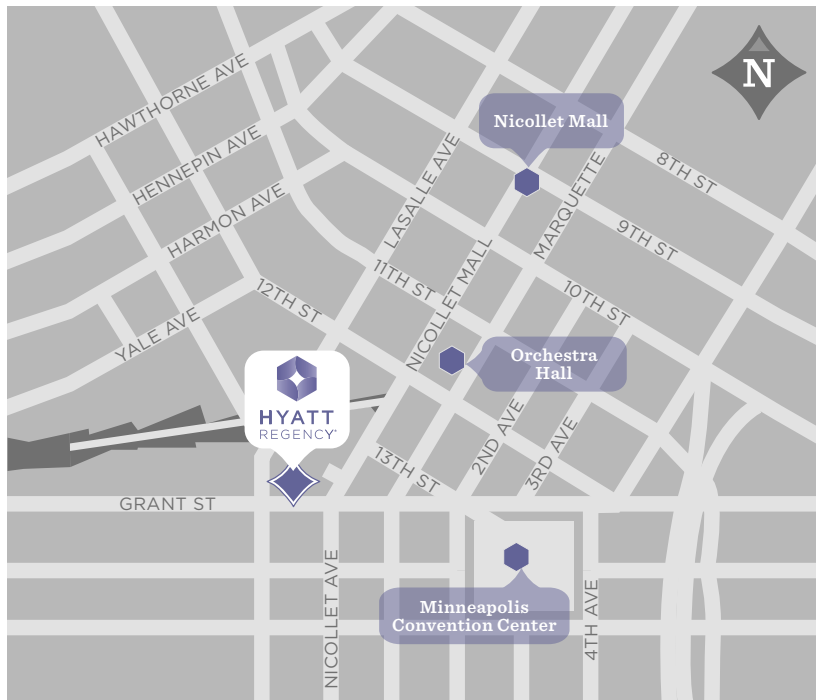
- *Prairie Kitchen and Bar*—features cuisine and decor designed to reflect the natural resources and unique growing seasons of Minnesota and surrounding states
- *MPLS Market*—seasonal, deli-style concept offers freshly brewed Starbucks® coffee, refreshing beverages, and locally inspired snacks

RECREATIONAL FACILITIES

- Indoor heated pool
- Hyatt StayFit gym – a 32,000 sq ft full service health club featuring Life Fitness® Cardio equipment, free weights, basketball and racquetball courts
- Jogging paths
- Nice Ride bicycle station; Bicycling trail

MEETING & EVENT SPACE

- A total of 105,000 sq. ft. of high tech function space including over 16,000 sq. ft. of prefunction space, and 30,000 sq. ft. of dedicated exhibit space
- 45 meeting rooms including an executive boardroom with seating for 18
- The 30,000 sq. ft. Hyatt Exhibition Center is on the Ground Level with direct street access, separate street entrance, adjacent to Nicollet Ballroom and Nicollet Promenade, entrance is 10' high with false grid ceiling, standard and custom electric available, computer and phone jacks available throughout, unlimited floor load and is fully carpeted
- Individual or master controls in all meeting rooms for heat / AC, sound, music, telephones, special lighting effects and 110V single-phase electricity
- Four elegant grand ballrooms, one including floor to ceiling windows overlooking Loring Greenway
- On-site audiovisual providers
- Kosher available on-site



HYATT REGENCY MINNEAPOLIS

1300 Nicollet Mall
 Minneapolis, MN 55403
 USA

T +1 612 370 1234
 F +1 612 370 1463
 minneapolis.hyatt.com



CAPACITY CHART



Room Name	Room Dimensions L x W x H	Room Size Sq. Ft.	Banquet	Reception	Theater	Classroom	Boardroom	U-Shape	Hollow Square	Exhibit
Main Level Meeting Rooms										
HYATT EXHIBIT HALL	235' x 164' x 10'7"	30,000	2,000	2,500	—	—	—	—	—	130
NICOLLET BALLROOM	165' x 81' x 16'9"	13,365	1,000	1,500	1,500	828	—	—	—	76
<i>Nicollet A or D</i>	52' x 81' x 16'9"	4,212	200	500	398	232	116	127	161	—
<i>Nicollet C</i>	30' x 81' x 16'9"	2,430	165	287	240	120	—	—	—	—
<i>Nicollet A1, D1</i>	23'5" x 52' x 16'9"	1,222	60	150	100	78	40	36	40	—
<i>Nicollet A1 + A2</i>	57'5" x 52' x 16'9"	2,964	140	350	298	186	76	92	121	—
<i>Nicollet A3, D3</i>	23'5" x 52' x 16'9"	1,222	60	150	100	76	40	35	40	—
<i>Nicollet D2</i>	34' x 52' x 16'9"	1,768	100	250	198	108	42	38	42	—
<i>1/2 Nicollet Ballroom</i>	82'5" x 81' x 16'9"	6,682	450	750	750	396	—	—	—	38
<i>Nicollet B1 + C1</i>	60' x 57' x 16'9"	3,420	240	400	340	180	68	66	68	—
<i>Nicollet B + C</i>	60' x 81' x 16'9"	4,941	330	575	480	240	—	—	—	21
<i>Nicollet Promenade</i>	—	5,700	200	600	—	—	—	—	—	—
GRANT ROOM	22' x 23' x 8'	506	20	30	20	18	16	14	16	—
LORING ROOM	23' x 18' x 8'	414	20	30	20	18	16	14	16	—
LAKESHORE BALLROOM	75' x 59' x 16'	4,425	210	400	300	189	52	59	70	21
<i>Lakeshore A</i>	28' x 59' x 16'	1,652	60	200	117	63	46	48	54	7
<i>Lakeshore B</i>	22' x 59' x 16'	1,298	60	150	117	63	46	48	54	7
<i>Lakeshore c</i>	23' x 59' x 16'	1,357	60	175	112	63	46	48	54	7
Second Level Meeting Rooms										
GREENWAY BALLROOM	111' x 81' x 9'6"	8,991	500**	1,000	868	588	—	—	—	54
<i>Greenway Ballroom A</i>	40' x 25' x 9'6"	1,000	60	100	96	62	30	34	38	—
<i>Greenway Ballroom B</i>	40' x 21' x 9'6"	840	50	100	80	58	30	34	38	—
<i>Greenway Ballroom C</i>	40' x 21' x 9'6"	840	50	100	80	58	30	34	38	—
<i>Greenway Ballroom D</i>	40' x 21' x 9'6"	840	50	100	80	58	30	34	38	—
<i>Greenway Ballroom E</i>	40' x 21' x 9'6"	840	50	100	80	58	30	34	38	—
<i>Greenway Ballroom F</i>	40' x 21' x 9'6"	840	50	100	80	58	30	34	38	—
<i>Greenway Ballroom G</i>	40' x 21' x 9'6"	840	50	100	80	58	30	34	38	—
<i>Greenway Ballroom H</i>	40' x 21' x 9'6"	840	50	100	80	58	30	34	38	—
<i>Greenway Ballroom I</i>	40' x 21' x 9'6"	840	50	100	80	58	30	34	38	—
<i>Greenway Ballroom J</i>	40' x 25' x 9'6"	1,000	60	100	96	62	30	39	42	—
<i>1/2 Greenway Ballroom</i>	111' x 40' x 9'6"	4,040	260	500	412	255	—	—	—	23
GREENWAY BALLROOM PROMENADE	—	2,052	—	—	—	—	—	—	—	—
REGENCY ROOM	59' x 57' x 12'	3,363	220	300	320	180	40	47	64	16
MIRAGE ROOM	82' x 30' x 8'6"	2,500	130	200	250	150	58	62	70	10
SKYWAY ROOM	28' x 46' x 8'6"	1,288	80	100	150	63	34	38	46	—
<i>Skyway A</i>	28' x 23' x 8'6"	644	40	50	50	30	16	14	22	—
<i>Skyway B</i>	28' x 23' x 8'6"	644	40	50	50	30	16	14	22	—
ST. CROIX	33' x 22' x 8'	726	40	65	68	30	20	22	24	—
MINNEHAHA	44' x 22' x 8'	968	60	75	95	48	28	30	36	—
NORTHSTAR BALLROOM	87' x 148' x 11'10"	10,620	500	850	1,000	418	—	—	—	—
<i>Northstar A</i>	87' x 86' x 11'10"	5,890	300	560	500	240	58	74	94	—
<i>Northstar B</i>	87' x 62' x 11'10"	4,730	200	360	244	144	44	50	58	—

HYATT REGENCY MINNEAPOLIS

1300 Nicollet Mall
 Minneapolis, MN 55403
 USA

T +1 612 370 1234
 F +1 612 370 1463
 minneapolis.hyatt.com



CAPACITY CHART



Room Name	Room Dimensions L x W x H	Room Size Sq. Ft.	Banquet	Reception	Theater	Classroom	Boardroom	U-Shape	Hollow Square	Exhibit
Fourth Floor Meeting Rooms										
GREAT LAKES BALLROOM	152' x 79' x 19'	12,008	670	1,400	1,350	642	—	—	—	60
Great Lakes A1	25'5" x 50 x 19	1,275	50	150	117	63	34	40	46	—
Great Lakes A2	26' x 50 x 19	1,300	60	150	114	63	34	40	46	—
Great Lakes A3	25'5" x 50 x 19	1,275	50	150	117	63	34	40	46	—
Great Lakes A	50' x 79' x 19'	3,950	150	450	348	198	58	74	94	20
Great Lakes B	51' x 79' x 19'	4,029	190	500	390	210	58	74	94	20
Great Lakes C	50' x 79' x 19'	3,871	190	450	390	210	58	74	94	20
Great Lakes AB	101' x 79' x 19'	7,979	380	950	780	420	—	—	—	40
Great Lakes BC	101' x 79' x 19'	7,900	380	950	780	420	—	—	—	40
GREAT LAKES PROMENADE (ABC FRONT)	42' x 83' x 9'	3,486	—	—	—	—	—	—	—	—
GREAT LAKES PROMENADE (A SIDE)	199' x 24' x 9'	4,776	—	—	—	—	—	—	—	—
LAKE MINNETONKA	43' x 25' x 9'	1,075	80	100	96	54	28	36	42	—
LAKE CALHOUN	43' x 29' x 9'	1,247	80	100	108	54	28	36	42	—
LAKE HARRIET	43' x 25' x 9'	1,075	80	100	96	54	28	36	42	—
EXECUTIVE BOARDROOM	22' x 42' x 9'	924	—	—	—	—	18	—	—	—
LAKE NOKOMIS	22' x 27' x 9'	594	40	50	55	27	16	22	24	—
LAKE OF THE ISLES	22' x 27' x 9'	594	40	50	55	27	16	22	24	—
CEDAR LAKE	22' x 18' x 9'	396	20	30	36	18	16	18	18	—
MEETING PLANNER OFFICE A	14' x 8' x 9'	112	—	—	—	—	—	—	—	—
MEETING PLANNER OFFICE B	14' x 18' x 9'	252	—	—	—	—	—	—	—	—
Fifth Floor Meeting Rooms										
LAKE SUPERIOR	52' x 53' x 9'	2,840	180	250	320	160	40	45	54	—
Lake Superior A	52' x 29' x 9'	1,560	100	150	170	108	40	45	54	—
Lake Superior B	52' x 24' x 9'	1,280	80	100	150	66	40	42	48	—

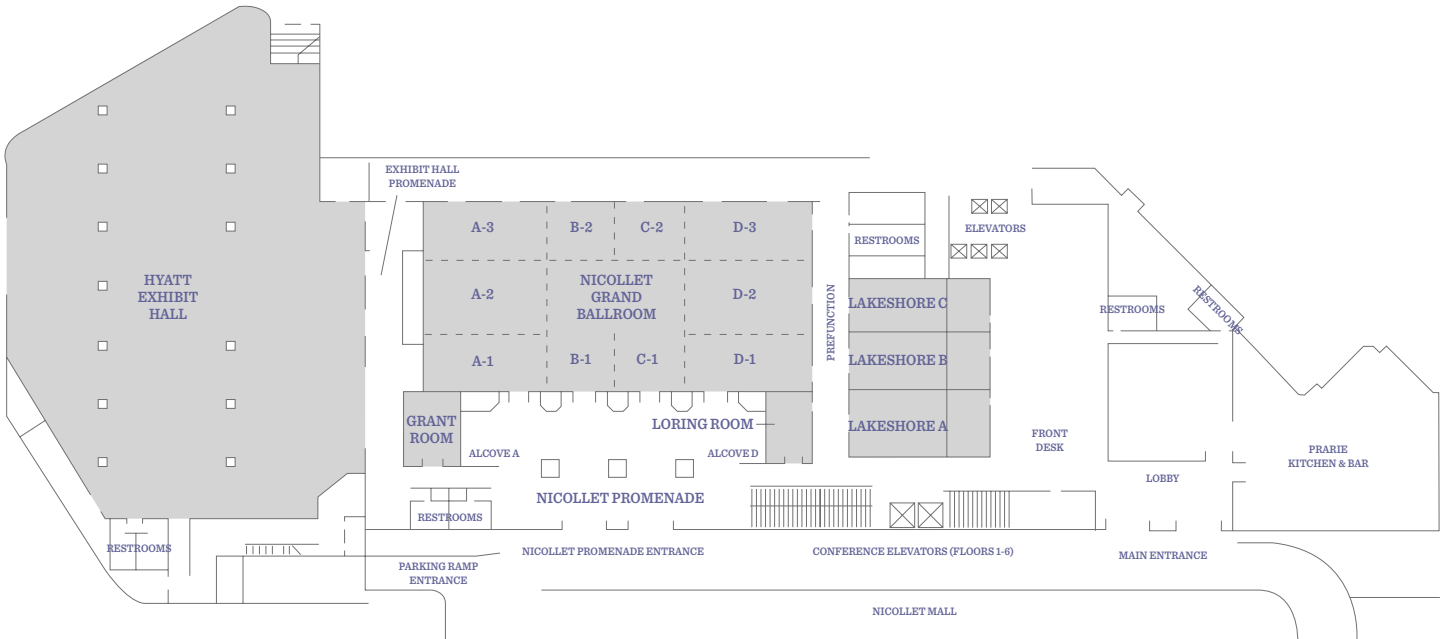
HYATT REGENCY MINNEAPOLIS

1300 Nicollet Mall
Minneapolis, MN 55403
USA

T +1 612 370 1234
F +1 612 370 1463
minneapolis.hyatt.com



FLOOR PLAN
Main Level Meeting Rooms



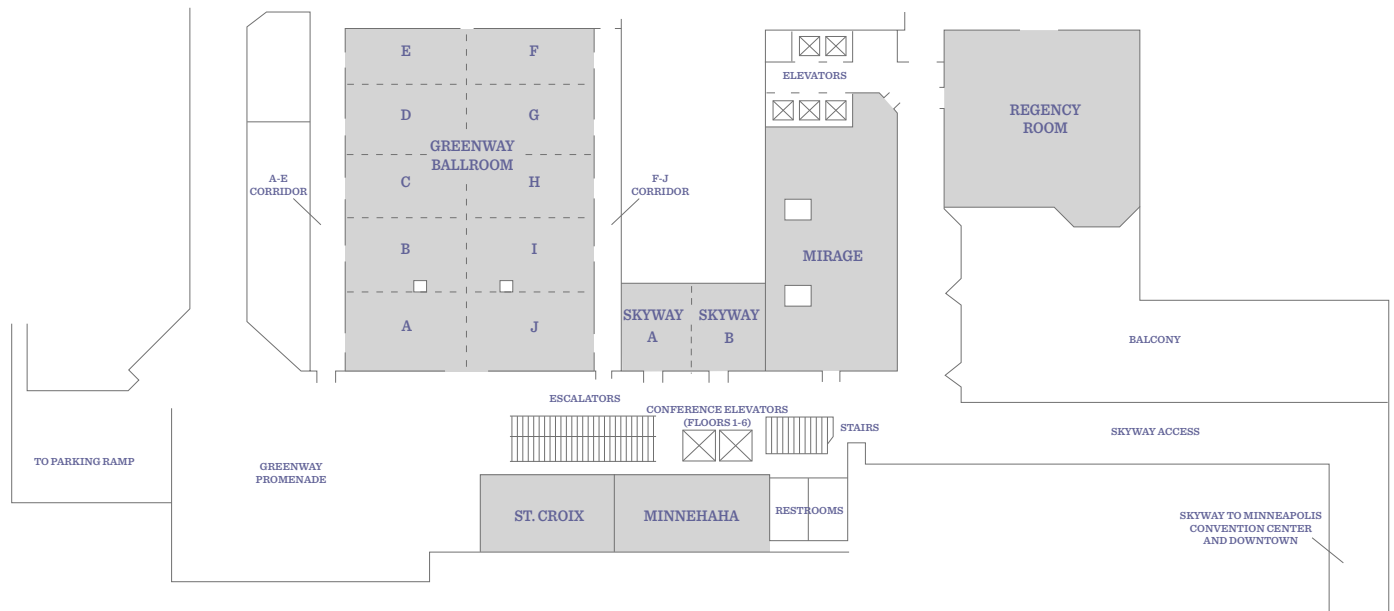
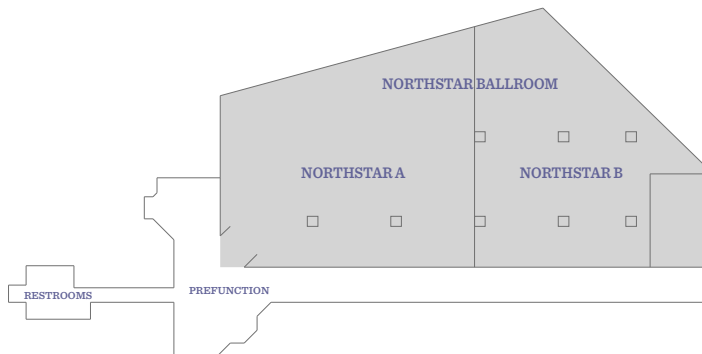
HYATT REGENCY MINNEAPOLIS

1300 Nicollet Mall
Minneapolis, MN 55403
USA

T +1 612 370 1234
F +1 612 370 1463
minneapolis.hyatt.com



FLOOR PLAN
Second Level Meeting Rooms



HYATT REGENCY MINNEAPOLIS

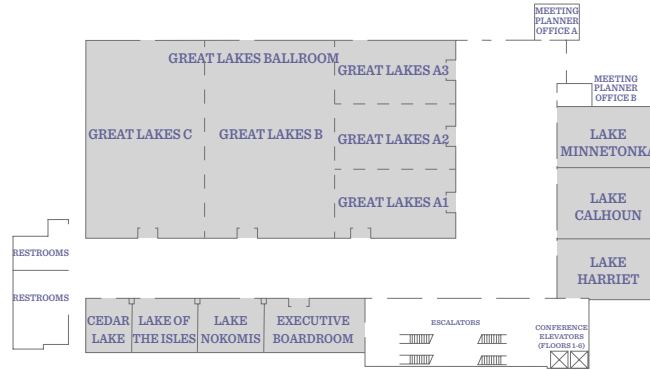
1300 Nicollet Mall
Minneapolis, MN 55403
USA

T +1 612 370 1234
F +1 612 370 1463
minneapolis.hyatt.com



FLOOR PLAN

Fourth Floor Meeting Rooms



Fifth Floor Meeting Rooms

