

# THE WESTIN MINNEAPOLIS

At The Westin Minneapolis, we know that when you feel your best you can truly be your best and that means paying careful attention to the most important elements of your stay. When you hold your meetings at a Westin hotel, we remove the distractions so your group can focus in a calm and comfortable environment.

## THE WESTIN MINNEAPOLIS

88 South 6th Street, Minneapolis, MN 55402

T 612.333.4006 F 612.656.2368

[westin.com/minneapolis](http://westin.com/minneapolis)

### *Meetings Set for Success*

Our hotel offers a total of 15 meeting rooms with more than 9,000 square feet of sophisticated meeting accommodations. The Westin Minneapolis' Conference Center has no ballrooms or air walls to share with other meetings. Breathtaking views through floor-to-ceiling windows fill our banker's boardroom with light and charm. Five private dining rooms offer great small group options. B.A.N.K can host restaurant groups of up to 250 guests.

Our Clutter-Free Meetings help planners and guests stay organized and productive with an open room design, socially conscious amenities and delicious SuperFoodsRx menu choices to keep minds sharp. Streamlined stations keep everyone's individual work area neat and clear.

### *Rest Assured*

Each of our 214 contemporary guestrooms and suites offers our Heavenly Bed® and Heavenly Bath®, high-speed Internet access and dual-line and cordless phone with data port. Other amenities include a refreshment center, work desk with ergonomic chair, in-room safe and gourmet coffee. Westin also offers guests a 100% smoke-free environment.

Our spacious guestrooms and suites are welcoming, light-filled spaces.

|                 |     |
|-----------------|-----|
| KING            | 158 |
| DOUBLE/DOUBLE   | 56  |
| SUITES          | 19  |
| DISABLED ACCESS | 6   |

### *Thoughtful Extras*

Let us take care of you with services like concierge, business center, gift shop, ATM, Service Express®, valet and parking.

### *Fitness & Free Time*

Energize with our 24-hour WestinWORKOUT® fitness center featuring weight machines, free weights, cardio equipment that faces personal flat-screen televisions, indoor pool, locker rooms and whirlpool/hot tub facilities.

### *Eat & Drink Well*

Find stylish presentations of classic dishes at B.A.N.K, our modern American cuisine restaurant. Located in our spacious lobby, the 34-foot vaulted ceiling creates an open and airy atmosphere. Enjoy the active open kitchen from the huge center-stage gold bar, the long and inviting communal table, the intimate lounge seating, or the stately dining room.

Our hotel also offers 24-hour in-room dining.

### *Perfectly Located*

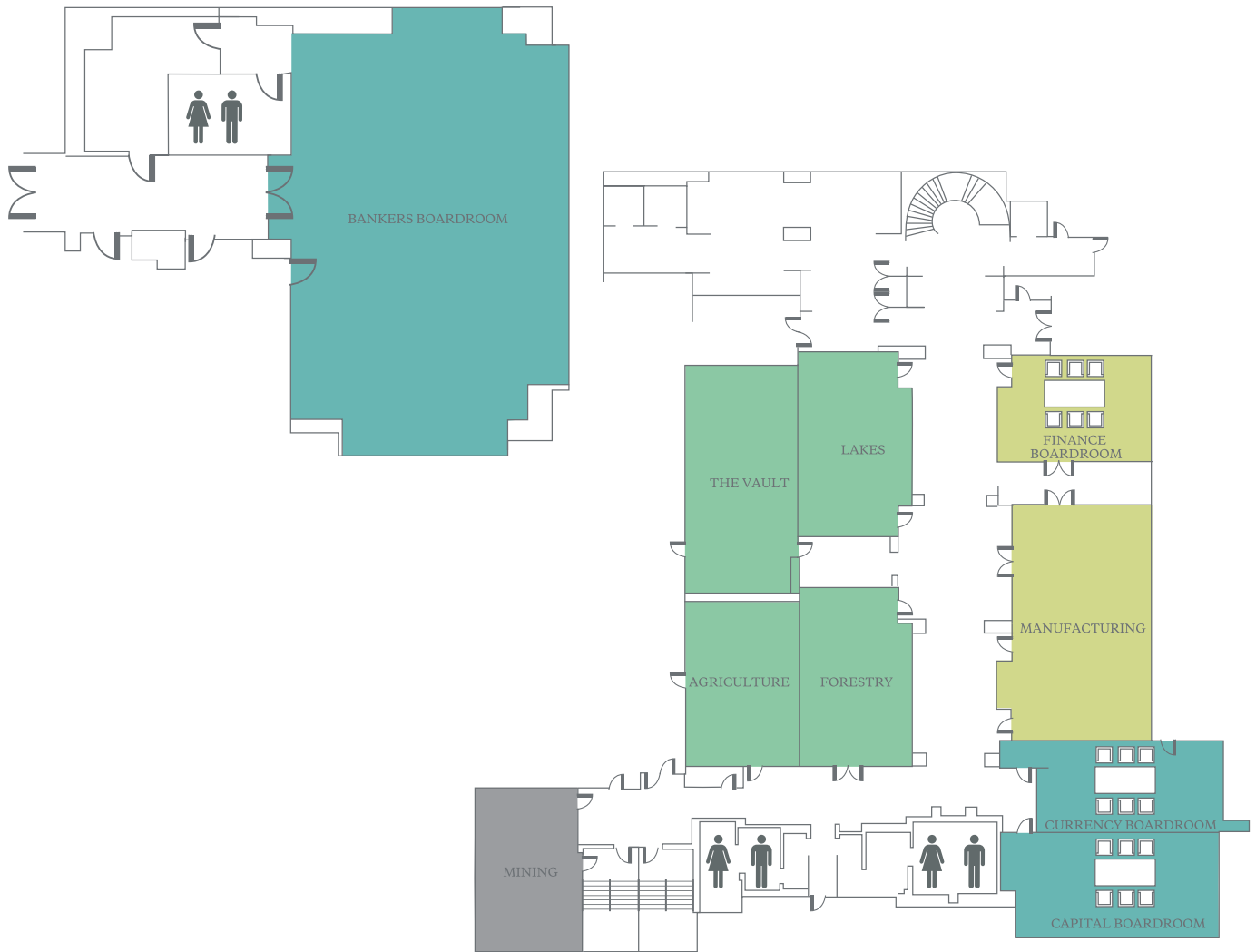
At the pulse of Cosmopolitan Minneapolis, our hotel is conveniently connected to over seven miles of skyway system - the city's signature walkway to business, shopping and entertainment venues. We are also a short walk from the Minneapolis Convention Center, Metrodome, Target Center, Target Field, and nationally recognized theatres and museums.

To begin planning your next Westin event, please visit [starwood.com/meetings](http://starwood.com/meetings) or [meetingsinamoment.com](http://meetingsinamoment.com)



**WESTIN**  
HOTELS & RESORTS

# FLOOR PLANS & CAPACITY CHART



|                              | Key | Dimensions (L x W) | Total Square Feet | Height | Banq. | Thtr. | Conf. | Rec. | Class | U-Shp | H.Sq. | Dinner Dance |
|------------------------------|-----|--------------------|-------------------|--------|-------|-------|-------|------|-------|-------|-------|--------------|
| LOWER LEVEL                  |     |                    |                   |        |       |       |       |      |       |       |       |              |
| Agriculture                  | ■   | 35' X 22'          | 733               | 8.0'   | 32    | 60    | 25    | 40   | 30    | 21    | 24    | -            |
| Forestry                     | ■   | 37' X 23'          | 810               | 8.0'   | 50    | 70    | 30    | 60   | 50    | 30    | 30    | 32           |
| Lakes                        | ■   | 37' X 23'          | 822               | 8.0'   | 50    | 70    | 30    | 60   | 50    | 30    | 30    | 32           |
| Manufacturing                | ■   | 56' X 24'          | 1,259             | 8.0'   | 100   | 130   | 42    | 100  | 70    | 42    | 42    | 56           |
| Mining                       | ■   | 32' X 21'          | 688               | 8.0'   | 40    | 60    | 24    | 40   | 45    | 27    | 24    | -            |
| The Vault                    | ■   | 44' X 20'          | 837               | 8.0'   | 50    | 70    | 30    | 60   | 40    | 33    | 30    | 32           |
| Capital Boardroom            | ■   | 32' X 22'          | 725               | 8.0'   | -     | -     | 16    | -    | -     | -     | -     | -            |
| Currency Boardroom           | ■   | 28' X 22'          | 600               | 8.0'   | -     | -     | 12    | -    | -     | -     | -     | -            |
| Finance Boardroom            | ■   | 28' X 22'          | 475               | 8.0'   | -     | -     | 12    | -    | -     | -     | -     | -            |
| TENTH FLOOR                  |     |                    |                   |        |       |       |       |      |       |       |       |              |
| Banker's Boardroom           | ■   | 45' X 24'          | 942               | 10.0'  | 50    | 70    | 30    | 60   | 50    | 30    | 30    | 32           |
| (Pre-function Space)         | -   | -                  | 3,254             | -      | -     | -     | -     | -    | -     | -     | -     | -            |
| Platinum Private Dining Room | -   | 13' X 14'          | 200               | 8.0'   | 8     | -     | -     | 15   | -     | -     | -     | -            |
| Silver Private Dining Room   | -   | 22' X 14'          | 348               | 8.0'   | -     | -     | 16    | 16   | -     | -     | -     | -            |
| Titanium Private Dining Room | -   | 13' X 14'          | 200               | 8.0'   | 8     | -     | 8     | -    | -     | -     | -     | -            |
| Copper Private Dining Room   | -   | 15' X 14'          | 220               | 8.0'   | -     | -     | 10    | 10   | -     | -     | -     | -            |
| Gold Private Dining Room     | -   | 21' X 18'          | 446               | 12.0'  | 24    | -     | 18    | 20   | -     | -     | -     | -            |